

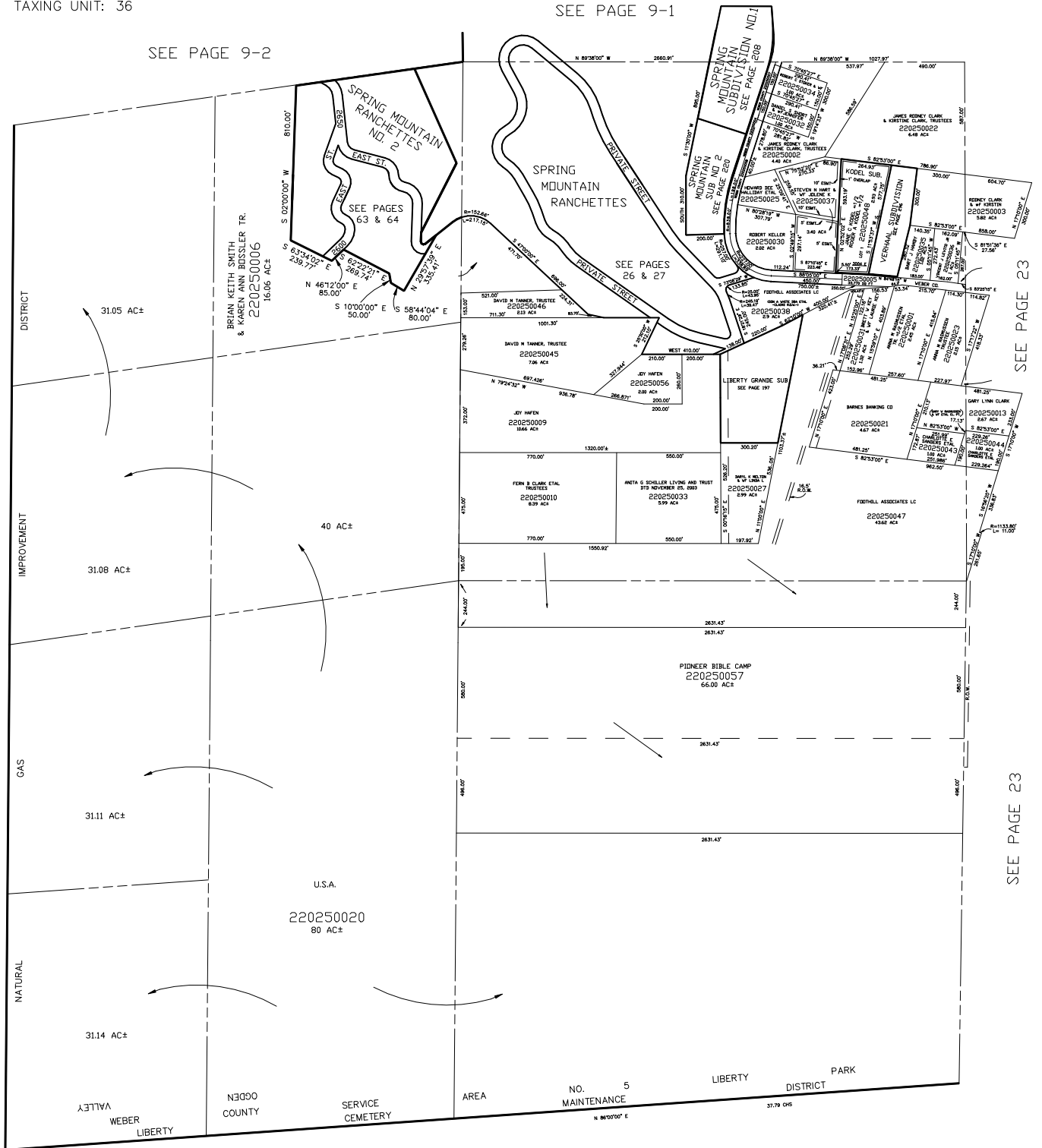
SECTION 30, T.7N., R.1E., S.L.B. & M.

LIBERTY DISTRICT  
SCALE 1" = 400'

TAXING UNIT: 36

SEE PAGE 9-1

SEE PAGE 9-2



SEE BOOK 16 PAGE 47

SEE PAGE 23

SEE PAGE 23

SEE PAGE 28